



## FRONT ELEVATION

SCALE: 1/8" = 1'-0"

COPYRIGHT © 2016 BY:  
FLOREZ DESIGN STUDIOS, INC.

# FLOREZ

DESIGN STUDIOS, INC.

PO Box 170, 9142 Caratoke Highway, Suite C  
Point Harbor, NC 27964

Tel: 252-491-8000 Fax: 252-491-9975

Email: florezdesignstudios@gmail.com  
www.florezdesignstudios.com

### *Lightkeeper's Cottage*

SP#15-249

DRAWN BY:

C.N. , B.D.

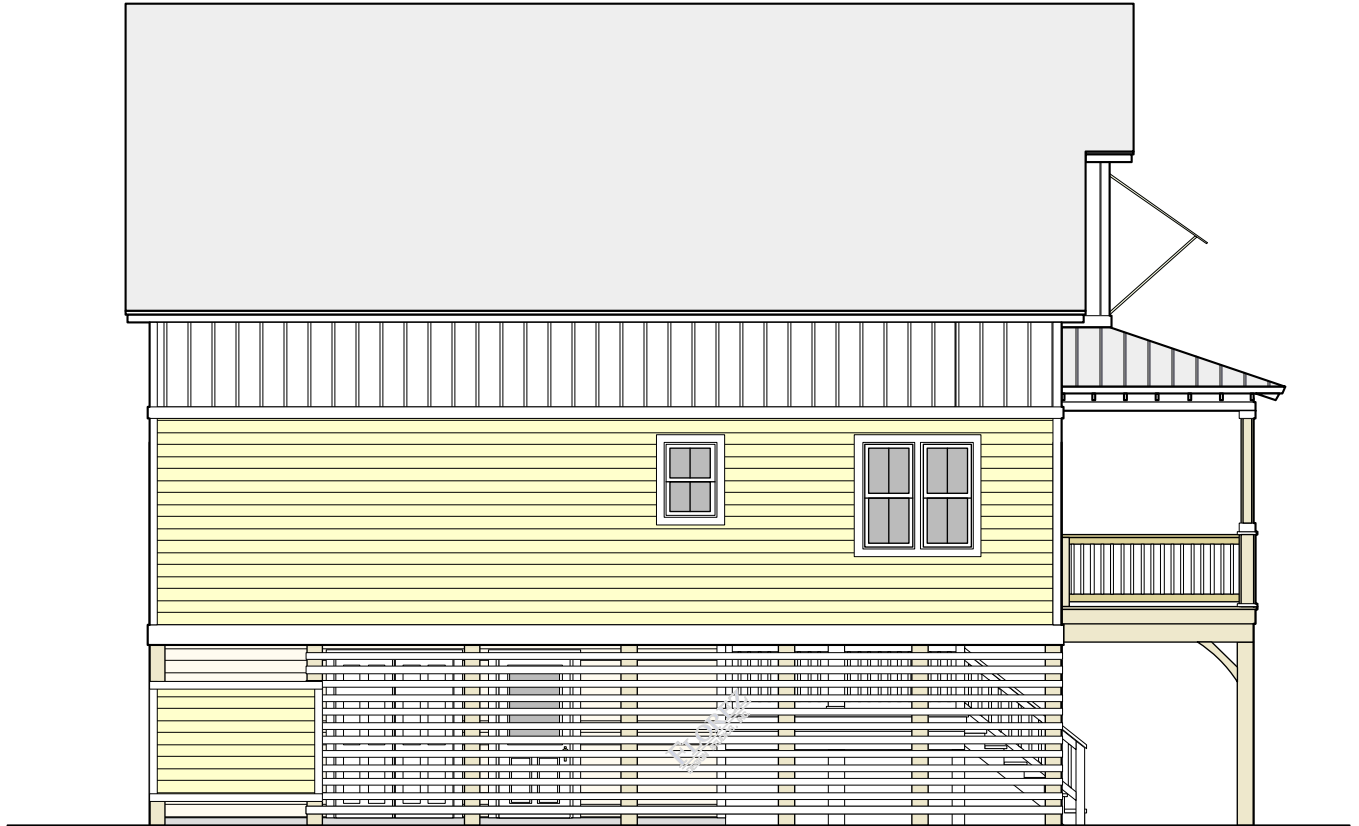
DATE:

Mar. 8, 2016

SHEET NO.

**1**

OF 7



**LEFT SIDE ELEVATION**

SCALE: 1/8" = 1'-0"

COPYRIGHT © 2016 BY:  
FLOREZ DESIGN STUDIOS, INC.

**FLOREZ**  
DESIGN STUDIOS, INC.  
PO Box 170, 9142 Caratoke Highway, Suite C  
Point Harbor, NC 27964  
Tel: 252-491-8000 Fax: 252-491-9975  
Email: florezdesignstudios@gmail.com  
www.florezdesignstudios.com

*Lightkeeper's Cottage*

SP#15-249

**DRAWN BY:**  
C.N. , B.D.

**DATE:**  
Mar. 8, 2016

**SHEET NO.**

**2**  
OF 7



## RIGHT SIDE ELEVATION

SCALE: 1/8" = 1'-0"

COPYRIGHT © 2016 BY:  
FLOREZ DESIGN STUDIOS, INC.

# FLOREZ

DESIGN STUDIOS, INC.

PO Box 170, 9142 Caratoke Highway, Suite C  
Point Harbor, NC 27964

Tel: 252-491-8000 Fax: 252-491-9975

Email: florezdesignstudios@gmail.com  
www.florezdesignstudios.com

## *Lightkeeper's Cottage*

SP#15-249

**DRAWN BY:**

C.N. , B.D.

**DATE:**

Mar. 8, 2016

**SHEET NO.**

**3**

**OF 7**



## REAR ELEVATION

SCALE: 1/8" = 1'-0"

COPYRIGHT © 2016 BY:  
FLOREZ DESIGN STUDIOS, INC.

# FLOREZ

DESIGN STUDIOS, INC.

PO Box 170, 9142 Caratoke Highway, Suite C  
Point Harbor, NC 27964

Tel: 252-491-8000 Fax: 252-491-9975

Email: florezdesignstudios@gmail.com  
www.florezdesignstudios.com

*Lightkeeper's Cottage*

SP#15-249

DRAWN BY:

C.N., B.D.

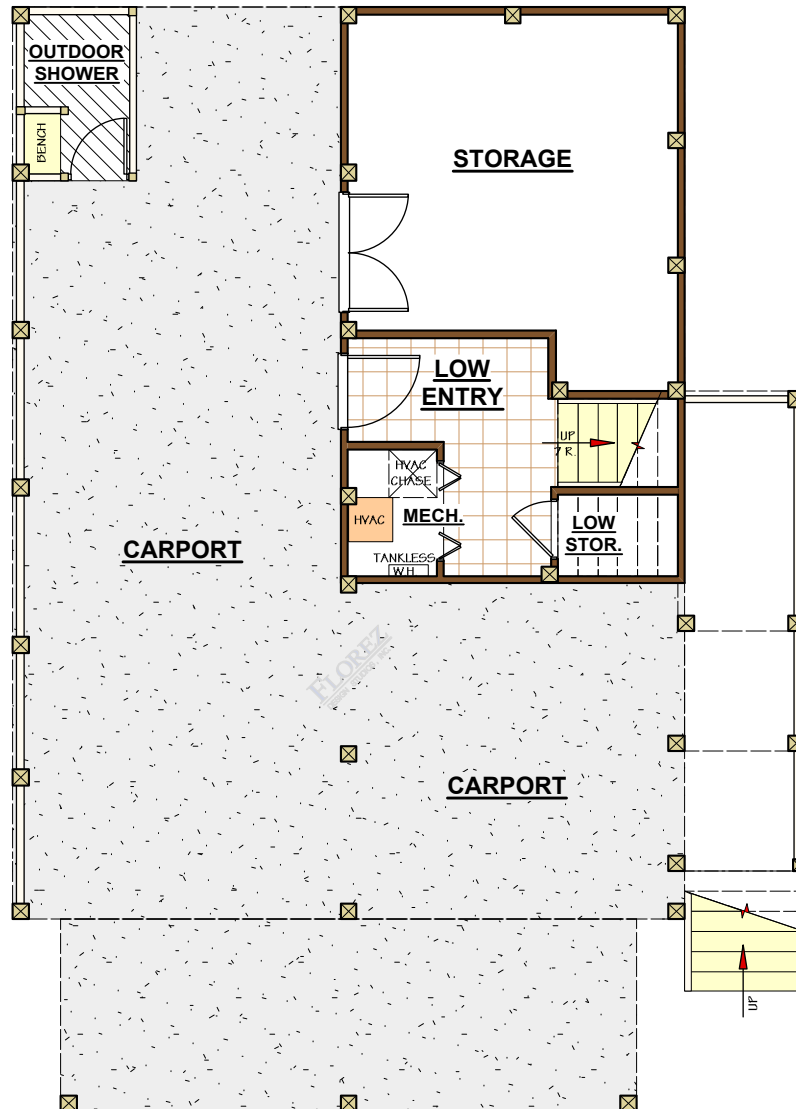
DATE:

Mar. 8, 2016

SHEET NO.

4

OF 7



## GROUND FLOOR PLAN

SCALE: 1/8" = 1'-0"

COPYRIGHT © 2016 BY:  
FLOREZ DESIGN STUDIOS, INC.

# FLOREZ

DESIGN STUDIOS, INC.

PO Box 170, 9142 Caratoke Highway, Suite C  
Point Harbor, NC 27964

Tel: 252-491-8000 Fax: 252-491-9975

Email: florezdesignstudios@gmail.com  
www.florezdesignstudios.com

## *Lightkeeper's Cottage*

SP#15-249

DRAWN BY:

C.N., B.D.

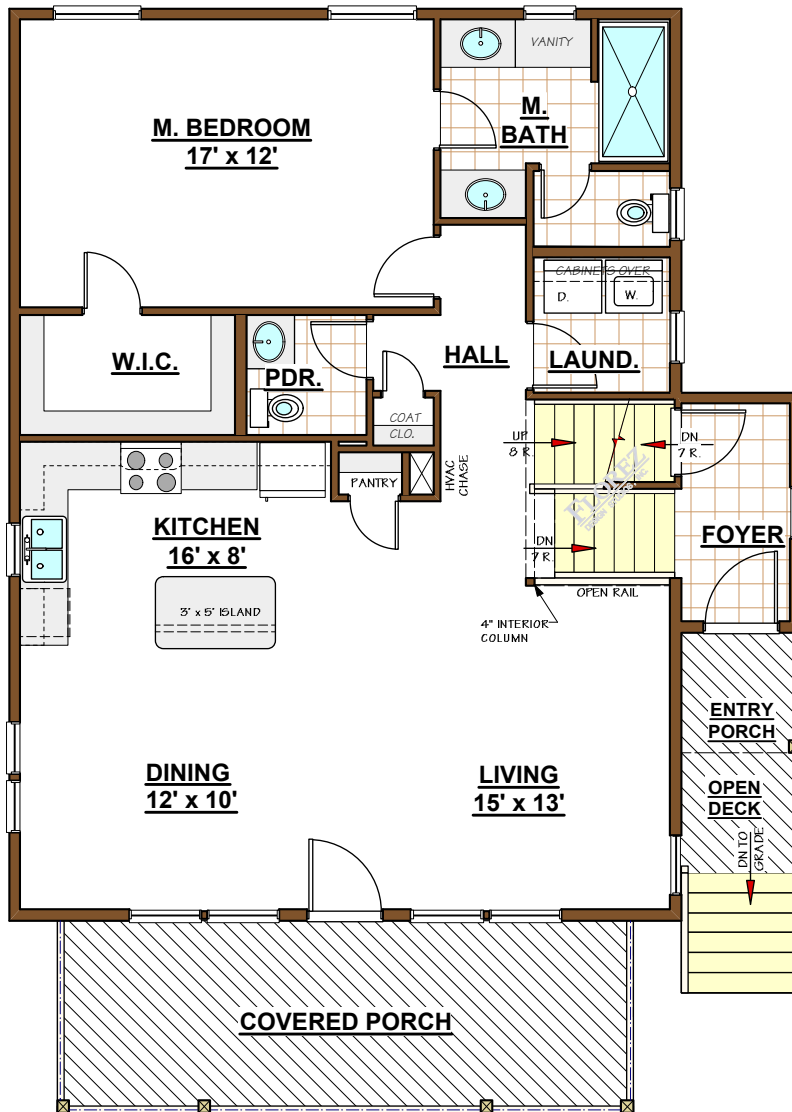
DATE:

Mar. 8, 2016

SHEET NO.

**5**

OF 7



## FIRST FLOOR PLAN

SCALE: 1/8" = 1'-0"

COPYRIGHT © 2016 BY:  
FLOREZ DESIGN STUDIOS, INC.

# FLOREZ

DESIGN STUDIOS, INC.

PO Box 170, 9142 Caratoke Highway, Suite C  
Point Harbor, NC 27964

Tel: 252-491-8000 Fax: 252-491-9975

Email: florezdesignstudios@gmail.com  
www.florezdesignstudios.com

## *Lightkeeper's Cottage*

SP#15-249

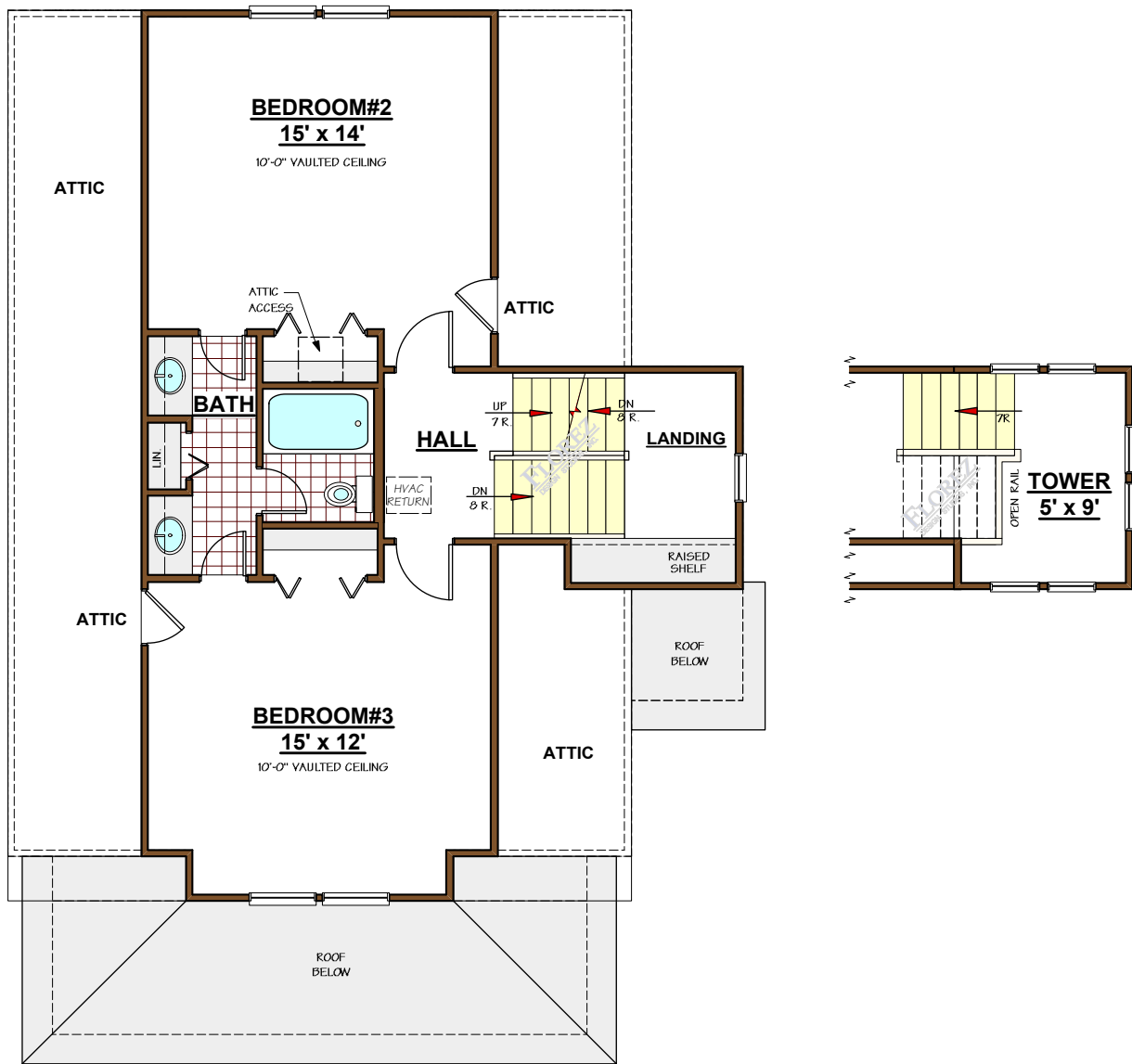
DRAWN BY:  
C.N., B.D.

DATE:  
Mar. 8, 2016

SHEET NO.

**6**

OF 7



## SECOND FLOOR PLAN

SCALE: 1/8" = 1'-0"

COPYRIGHT © 2016 BY:  
FLOREZ DESIGN STUDIOS, INC.

**FLOREZ**

DESIGN STUDIOS, INC.

PO Box 170, 9142 Caratoke Highway, Suite C  
Point Harbor, NC 27964

Tel: 252-491-8000 Fax: 252-491-9975

Email: florezdesignstudios@gmail.com  
www.florezdesignstudios.com

*Lightkeeper's Cottage*

SP#15-249

DRAWN BY:

C.N., B.D.

DATE:

Mar. 8, 2016

SHEET NO.

**7**

OF 7